

# LusterCote®

**Packaging sustainable solutions.** At Sappi, we don't make you choose between your commitment to sustainability and optimal packaging. When LusterCote is part of your packaging solution, you're sourcing a paper-based product—made from renewable resources—that's also recyclable, helping your brand stand out on the shelf.

## The LusterCote experience

### Sustainable sourcing

As a natural resource company, Sappi has always focused on promoting the long-term vitality of forests while boosting local economies. Our wood suppliers harvest trees using a system of best management practices (BMPs). Our sourcing practices also meet the requirements of the leading global certifications standards, including the Forest Stewardship Council® (FSC®-Co14955), the Sustainable Forestry Initiative® (SFI®) program and the Programme for the Endorsement of Forest Certification (PEFC/29-31-10).<sup>1</sup>

### Lean manufacturing

Energy use is an ongoing topic of global concern, so Sappi remains committed to decreasing energy consumption and improving process efficiencies across our entire manufacturing operation. Because fossil fuel use is closely linked to climate change and is a major cost driver in manufacturing paper products, we derive most of our energy from renewable sources and set a goal to reduce energy intensity by 5%.

Since 2014 we've reduced the raw materials losses in our pulp mills by over 24%. Efficient use of raw materials means greater cost savings and reduced environmental impact.

### Safe use

Sappi's LusterCote paper has superior printability and ink hold-out using a wide variety of inks and coatings. Heavyweight LusterCote (70, 80, and 95lb) has been designed to provide superior conversion and lamination performance on a wide range of commercial C1S applications, such as litho labels, envelopes, book dust jackets, setup boxes, and point-of-purchase displays.

Lightweight LusterCote (55, 60, and 65lb) is produced with online finishing, which enhances sheet stiffness, stability, and performance at the converter, on press, and in downstream operations. The applications of the LusterCote (55, 60, and 65lb) include cut-and-stack labels, banderoles, metallizing, and envelopes. LusterCote complies with FDA regulations for food contact, with restrictions in certain food contact applications.<sup>2</sup>



### Recyclable paper

Our LusterCote sheet is often laminated to other materials, such as recycled corrugate, to deliver a 100% recyclable end product. Additionally, paper and paperboard have high recycling rates—nearly seven times that of plastic. LusterCote is also used in metal cans and glass-jar label applications, which have nearly three times greater recovery rates over plastic.<sup>3</sup>

Sappi continues to encourage initiatives to improve product labeling for how to recycle packaging, such as rinsing cans or removing paper labels. We're strong proponents of educational outreach and programs that lead to higher recovery of paper and other recyclable materials.



<sup>1</sup> Sold standard with an SFI Certified Sourcing claim to North American customers. Eligible for FSC Mix Credit, SFI % Certified Forest Content, or 100% PEFC claims, based upon customer request, pending availability of credits.

<sup>2</sup> FDA Statement of Compliance for LusterCote available on request.

<sup>3</sup> EPA Recycling Statistics from Advancing Sustainable Materials Management: 2014 Fact Sheet, published in November 2016.

# LusterCote product specifications

If you care about the performance of your packaging, look no further. Sappi's LusterCote is a packaging paper designed specifically for challenging converting applications.

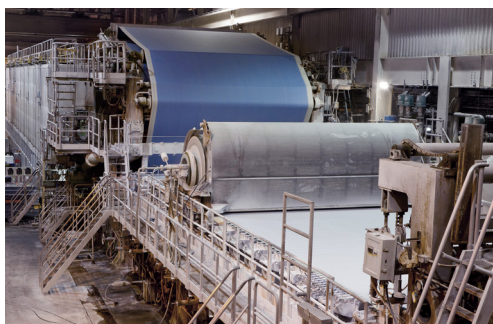
PROPERTY	UNITS	SOMERSET MILL TYPICAL VALUE				CLOQUET MILL TYPICAL VALUE			TEST METHOD
Basis Weight	lb/3300 sf	55	60	65	70	70	80	95	TAPPI T410
Basis Weight	gsm	81	89	96	104	104	118	141	TAPPI T410
Brightness	% reflectance	88	88	88	88	90	90	90	TAPPI T452
Gloss	% reflectance	68	68	68	68	70	70	70	TAPPI T480—75 Degree Gloss
Opacity	%	88	89.5	90	89.5	91.5	93.0	95.0	TAPPI T425
Smoothness	microns	0.8	0.8	0.8	0.8	0.8	0.8	0.8	TAPPI T555—Parker Print Surf
Caliper	.001 in (mils)	2.9	3.1	3.4	3.6	3.6	4.0	4.8	TAPPI T411
Thickness	microns	74	79	86	91	91	102	123	TAPPI T411
Tensile, CD	lb/in	16.0	17.0	18.0	18.0	17.0	20.0	22.0	TAPPI T494
Tear, MD	g-force	51.0	56.0	61.0	70.0	56.0	68.0	76.0	TAPPI T414—Elmendorf Tear
Cobb Size (2min)	gsm	26	26	75	<31	<35	<35	<35	TAPPI T441

## WORLD-CLASS MANUFACTURING



### Paper Machine #2 at Sappi's Somerset Mill

Originally built in 1986  
 Major rebuild in 2002  
 Online coating and calendering  
 40- to 60-lb. coated two-side grades  
 55- to 70-lb. LusterCote  
 280 inches wide and over 500 feet long  
 Production speeds up to 3,500 ft/min.  
 Production capacity of 225,000 TPA



### Paper Machine #12 at Sappi's Cloquet Mill

Originally built in 1988  
 Major rebuilds in 2005, 2013, and 2017  
 Online pre-coating  
 Offline top-coating and calendering  
 60- to 146-lb. coated two-side grades  
 70-, 80-, and 95-lb. LusterCote  
 188 inches wide and 350 feet long  
 Production speeds up to 2,500 ft/min.  
 Production capacity of 190,000 TPA



Sappi has a dedicated direct sales team focused on selling into the packaging segment. Supported by an incredible inside sales team, you can count on Sappi to deliver outstanding customer service. Sappi's technical services group can help with all aspects of the printing and converting process. A national team of representatives is available for trials, product qualification, or troubleshooting. Our help line is staffed by experts around the clock at 1.877.SappiHelp.

The data, specifications, and/or certifications provided herein are current as of the date of printing and may change without notice at Sappi's discretion.

Sappi is a trademark of Sappi Limited. LUSTERCOTE is a trademark of Sappi North America, registered in the U.S. and other countries.

Sappi North America  
 255 State Street  
 Boston, MA 02109



For more information about Sappi's sustainability performance, please visit [sappi.com](http://sappi.com).

© 2022 Sappi North America, Inc.  
 All rights reserved.

Effective 08.22  
 PRO-6293

800.882.4332  
[www.sappi.com](http://www.sappi.com)

