



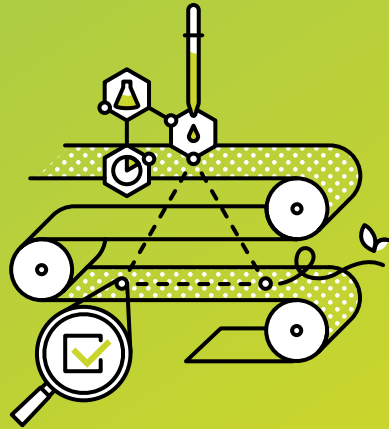
The fine line between price and performance.

Greatness doesn't guarantee an unlimited budget.

That's why we've engineered Flo® to give you the quality you expect from Sappi paper at a price that makes it hard to resist. Flo's superior color balance helps your brand look its best under a variety of lighting conditions. And because Flo is a great match to most standard proofing media, what you see before you print is what you get in the final product. With Flo, you get an exceptional experience that fits within your cost structure.

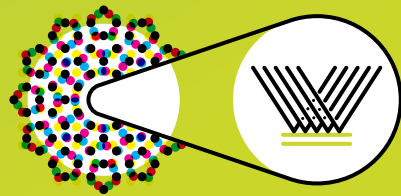
Celebrated for so much more than price

Sappi is chosen for our quality ingredients, environmental responsibility, reliable on-press performance, and attention to the smallest of details. Flo brings you dynamic features at a practical price so you can meet the demands of your brand and your budget.



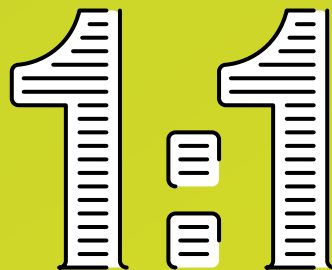
A natural beauty

Flo's superior print surface, balanced shade, and optimized brightness provide accurate color reproduction while enhancing vibrant, fully saturated colors. With Flo, skin tones look natural, images are true, and critical colors are spot-on—reflecting beautifully on your brand.



What you saw is what you'll see

Flo is engineered for consistency—both in surface uniformity and for optimal printed color stability. It's the printer's choice for accurately matching color proofs and ensuring that what you saw on press is what you'll see in the final piece. Your printed color becomes more predictable in any environment—whether on press, in the office, or outside in natural lighting conditions.



Flo—Sheets

FINISH	TEXT OR COVER	BASIS WEIGHT (lb/gsm)	BRIGHTNESS STD.	OPACITY STD.	GLOSS STD.	CALIPER AVG.	GUAR. CALIPER	PPI	THICKNESS (microns)	L*a*b* PAPER WHITE ¹
Gloss	Text	70/104	90	91.5	68	.0031		638	79	95.80, 1.22, -3.25
		80/118	90	93.0	68	.0035		572	89	95.80, 1.22, -3.25
		100/148	90	96.5	68	.0043		466	109	95.80, 1.22, -3.25
	Cover	80/216	90	97.5	68	.0072	7pt ²	278	183	95.80, 1.22, -3.25
		100/270	90	99.0	68	.0093	9pt ³	214	236	95.80, 1.22, -3.25
		120/325	90	99.0	68	.0110		182	279	95.80, 1.22, -3.25
Dull	Text	70/104	90	92.0	47	.0033		612	84	95.80, 1.22, -3.25
		80/118	90	94.0	47	.0036		556	91	95.80, 1.22, -3.25
		100/148	90	96.5	47	.0047		426	119	95.80, 1.22, -3.25
	Cover	80/216	90	97.5	47	.0075	7pt ²	268	191	95.80, 1.22, -3.25
		100/270	90	99.0	47	.0099	9pt ³	202	251	95.80, 1.22, -3.25
		120/325	90	99.0	47	.0121		168	307	95.80, 1.22, -3.25
Matte	Text	60/89	90	92.0	22	.0032		626	81	95.80, 1.22, -3.25
		70/104	90	94.0	22	.0038		526	97	95.80, 1.22, -3.25
		80/118	90	94.5	36	.0041		488	104	95.80, 1.22, -3.25
		100/148	90	96.0	36	.0052		386	132	95.80, 1.22, -3.25
		110/162 ⁴	90	97.0	15	.0073	7pt ²	274	185	95.80, 1.22, -3.25
	Cover	65/176	90	98.5	36	.0072	7pt ²	278	183	95.80, 1.22, -3.25
		80/216	90	98.0	36	.0092	9pt ³	218	234	95.80, 1.22, -3.25
		100/270	90	99.0	36	.0106		190	269	95.80, 1.22, -3.25

1 CIE L*a*b* values are approximate and in conformance with ISO 13655:2017. Data are specified according to the measurement condition M0, measured using an X-Rite eXact, configured to D50, 2° Standard Observer, 45/0 measurement geometry, with white (self) backing. Values may vary significantly when measured with different instruments. Average CIE L*a*b* data are presented for relative paper shade comparisons—not as product specifications. Paper white values specified according to the measurement condition M1 are available upon request.

2 Guaranteed to meet US Postal Service 7-point minimum business-reply requirements.

3 Guaranteed to meet US Postal Service 9-point minimum business-reply requirements.

4 Matte Reply Card.

5 Meets SIMRA/NASTA specifications.

6 For PPI information, please contact your local Sappi sales representative.

All values listed are approximate and subject to change. Please visit sappi.com for the most up-to-date product specifications and available certifications.

Flo—Web

FINISH	TEXT OR COVER	BASIS WEIGHT (lb/gsm)	BRIGHTNESS STD.	OPACITY STD.	GLOSS STD.	CALIPER AVG.	GUAR. CALIPER	PPI	THICKNESS (microns)	L*a*b* PAPER WHITE ¹
Gloss	Text	40/59	82	88.0	55	.0020		996	51	92.5, 0.82, -1.75
		45/67	82	89.5	60	.0023		882	58	92.5, 0.82, -1.75
		50/74	82	90.0	60	.0025		792	64	92.5, 0.82, -1.75
Matte	Text	40/59 ⁵	82	90.0	29	.0022		— ⁶	56	92.5, 0.82, -1.75
		45/67 ⁵	82	91.5	23	.0024		— ⁶	61	92.5, 0.82, -1.75
		50/74 ⁵	82	91.7	23	.0027		— ⁶	69	92.5, 0.82, -1.75

Flo—Digital

FINISH	TEXT OR COVER	BASIS WEIGHT (lb/gsm)	BRIGHTNESS STD.	OPACITY STD.	GLOSS STD.	CALIPER AVG.	GUAR. CALIPER	PPI	THICKNESS (microns)	L*a*b* PAPER WHITE ¹
Gloss	Text	80/118	90	93.0	68	.0035		572	89	95.80, 1.22, -3.25
		100/148	90	96.5	68	.0043		466	109	95.80, 1.22, -3.25
	Cover	80/216	90	97.5	68	.0072	7pt ²	278	183	95.80, 1.22, -3.25
		100/270	90	99.0	68	.0093	9pt ³	214	236	95.80, 1.22, -3.25
		120/325	90	99.0	68	.0110		182	279	95.80, 1.22, -3.25
Dull	Text	80/118	90	94.0	47	.0036		556	91	95.80, 1.22, -3.25
		100/148	90	96.5	47	.0047		426	119	95.80, 1.22, -3.25
	Cover	80/216	90	97.5	47	.0075	7pt ²	268	191	95.80, 1.22, -3.25
		100/270	90	99.0	47	.0099	9pt ³	202	251	95.80, 1.22, -3.25
		120/325	90	99.0	47	.0121		168	307	95.80, 1.22, -3.25

The names, symbols, logos, and all other intellectual property of the companies, brands, and people appearing herein are the exclusive property of their respective owners and should not be interpreted as an endorsement of or by Sappi; any legal and equitable rights in their intellectual property are exclusively reserved to those owners.

The data, specifications, and/or certifications provided herein are current as of the date of printing and may change without notice at Sappi's discretion.

Sappi is a trademark of Sappi Limited. FLO is a trademark of Sappi North America, registered in the U.S. and other countries.

Sappi North America FSC License Code FSC-C014955 and PEFC License Number PEFC/29-31-10.

© 2021 Sappi North America. All rights reserved.

Production Notes

Flo Dull Cover 80lb/216gsm, 4-color process, chrome silver plus gloss and dull varnishes and pearl coating

For more information about Flo, please visit www.sappi.com/Flo or scan the QR code.

Sappi North America
255 State Street, Boston, MA 02109

800.882.4332
www.sappi.com



The Fine Line of Sappi Papers

Our products

We engineer McCoy, Spectro, Opus, Somerset, Flo, Galerie, and EuroArt Plus to meet specific user needs, but there are several attributes you'll get from every piece of Sappi paper:

- Superior quality
- High-grade fiber
- Smooth printing surface
- Consistent press performance
- Dependability in the toughest printing environments
- Superior ink hold-out for full color intensity
- Uniform color reproduction
- Side-to-side consistency
- Tight variability tolerances
- Manufactured in the USA (McCoy, Spectro, Opus, Somerset, and Flo)

Pioneering research and innovation

At Sappi, our passion for paper can be traced back over 165 years and is what guides us today. Our history of industry firsts includes the first paper coated and calendered on two sides, the first dull-coated paper, and the first mill-branded paper. Our innovative spirit is also demonstrated in initiatives like *Sappi etc.* and *Ideas that Matter*, which provide thought leadership for the entire paper industry.

Sustainability

When you commit to a print campaign, you should be confident in your paper company's approach to sustainability. That's why we take a holistic view of our environmental responsibilities—from harvest through manufacturing, distribution, end use, and disposal. From beginning to end, we infuse environmental and social responsibility into our paper, processes, and people, in order to give you one less thing to worry about. Flo's product features include:

- 10% recycled fiber in all Flo sheet products (web available upon request)
- SFI Certified Sourcing
- FSC®, SFI®, or PEFC Chain-of-Custody (CoC) certified available upon request
- Lacey Act compliant
- SmartWay® Transport Partner

Best-in-class service

We go way beyond technical specifications to help you choose the right paper for your brand and campaign needs. And once you're on press, our trusted printer technical support team stands ready to make sure your project turns out just right.