



Authentic brilliance in a world of imitation.

**Like their customers, high-end brands expect
a legacy of craftsmanship.**

Clear distinction is required. Compromise does not exist. Only meticulous quality will suffice—so only McCoy® will satisfy. It's the only premium coated paper on the market, meeting the detail-obsessed needs of high-end, luxury brands. Our paper is made with superior ingredients, including our own custom coating, to ensure best-in-class brightness and image integrity—crossing the threshold from ordinary to outstanding.

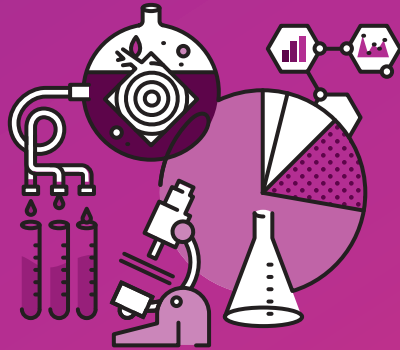
Luxury paper—realized

McCoy's supreme surface enables fully saturated films of ink to maintain superb detail, from shadow to highlight. Its unrivaled luminosity can expand the range of print and create bold contrast—allowing rich, vivid images to pop off the page. Offering a powerful, luminous, one-of-a-kind finish, McCoy creates an experience that lasts.



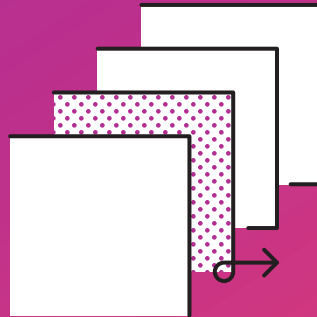
Perfection from its genesis

McCoy is rooted in our heritage of excellence, from the meticulous selection of wood types and fiber mix to manufacturing and refining our own proprietary coating. It's this unyielding attention to detail that seals in McCoy's sophistication.



Uncompromising variability tolerance

We adhere to tight tolerances for variability, to ensure that McCoy provides a consistent, stunning, blue-white printing surface. So when you choose McCoy, your brand is printed on the highest-quality paper that exceeds the most demanding industry standards.



McCoy—Sheets

FINISH	TEXT OR COVER	BASIS WEIGHT (lb/gsm)	BRIGHTNESS STD.	OPACITY STD.	GLOSS STD.	CALIPER AVG.	GUAR. CALIPER	PPI	THICKNESS (microns)	L*a*b* PAPER WHITE ¹
Gloss	Text	80/118	96	95.0	72	.0037		540	94	95.90, 2.70, -7.30
		100/148	96	96.5	72	.0045		444	114	95.90, 2.70, -7.30
	Cover	80/216	96	98.5	72	.0069		290	175	95.90, 2.70, -7.30
		100/270	96	99.0	72	.0090		222	229	95.90, 2.70, -7.30
		120/325	96	99.0	72	.0110		182	279	95.90, 2.70, -7.30
Silk	Text	80/118	96	95.0	43	.0041		488	104	95.90, 2.70, -7.30
		100/148	96	96.5	43	.0050		404	127	95.90, 2.70, -7.30
	Cover	80/216	96	98.5	43	.0076		262	193	95.90, 2.70, -7.30
		100/270	96	99.0	43	.0098		204	249	95.90, 2.70, -7.30
		120/325	96	99.0	43	.0120		166	305	95.90, 2.70, -7.30
		130/352	96	99.0	43	.0132		152	335	95.90, 2.70, -7.30
Matte	Text	80/118	96	95.0	25	.0044		454	112	95.90, 2.70, -7.30
		100/148	96	96.5	25	.0056		356	142	95.90, 2.70, -7.30
	Cover	80/216	96	98.5	25	.0085		234	216	95.90, 2.70, -7.30
		100/270	96	99.0	25	.0106		188	269	95.90, 2.70, -7.30

McCoy—Gift Card

FINISH	TEXT OR COVER	BASIS WEIGHT (lb/gsm)	BRIGHTNESS STD.	OPACITY STD.	GLOSS STD.	CALIPER AVG.	GUAR. CALIPER	PPI	THICKNESS (microns)	L*a*b* PAPER WHITE ¹
Silk	Cover	288/780	96	99.0	43	.0280		68	748	95.90, 2.70, -7.30

1 CIE L*a*b* values are approximate and in conformance with ISO 13655:2017. Data are specified according to the measurement condition M0, measured using an X-Rite eXact, configured to D50, 2° Standard Observer, 45/0 measurement geometry, with white (self) backing. Values may vary significantly when measured with different instruments. Average CIE L*a*b* data are presented for relative paper shade comparisons—not as product specifications. Paper white values specified according to the measurement condition M1 are available upon request.

All values listed are approximate and subject to change. Please visit sappi.com for the most up-to-date product specifications and available certifications.

McCoy—Web

FINISH	TEXT OR COVER	BASIS WEIGHT (lb/gsm)	BRIGHTNESS STD.	OPACITY STD.	GLOSS STD.	CALIPER AVG.	GUAR. CALIPER	PPI	THICKNESS (microns)	L*a*b* PAPER WHITE ¹
Gloss	Text	80/118	96	95.0	72	.0037		540	94	95.90, 2.70, -7.30
		100/148	96	96.5	72	.0048		414	122	95.90, 2.70, -7.30
	Cover	80/216	96	98.5	72	.0070		286	178	95.90, 2.70, -7.30
Silk	Text	80/118	96	95.0	43	.0041		488	104	95.90, 2.70, -7.30
		100/148	96	96.5	43	.0053		376	135	95.90, 2.70, -7.30
	Cover	80/216	96	98.5	43	.0076		262	193	95.90, 2.70, -7.30
Matte	Text	80/118	96	95.0	25	.0045		444	114	95.90, 2.70, -7.30
		100/148	96	96.5	25	.0058		344	147	95.90, 2.70, -7.30
	Cover	80/216	96	98.5	25	.0085		234	216	95.90, 2.70, -7.30

McCoy—Digital and Digital for HP Indigo

FINISH	TEXT OR COVER	BASIS WEIGHT (lb/gsm)	BRIGHTNESS STD.	OPACITY STD.	GLOSS STD.	CALIPER AVG.	GUAR. CALIPER	PPI	THICKNESS (microns)	L*a*b* PAPER WHITE ¹
Gloss	Text	80/118	96	95.0	72	.0037		540	94	95.90, 2.70, -7.30
		100/148	96	96.5	72	.0045		444	114	95.90, 2.70, -7.30
	Cover	80/216	96	98.5	72	.0069		290	175	95.90, 2.70, -7.30
		100/270	96	99.0	72	.0090		222	229	95.90, 2.70, -7.30
		120/325	96	99.0	72	.0110		182	279	95.90, 2.70, -7.30
Silk	Text	80/118	96	95.0	43	.0041		488	104	95.90, 2.70, -7.30
		100/148	96	96.5	43	.0050		404	127	95.90, 2.70, -7.30
	Cover	80/216	96	98.5	43	.0076		262	193	95.90, 2.70, -7.30
		100/270	96	99.0	43	.0098		204	249	95.90, 2.70, -7.30
		120/325	96	99.0	43	.0120		166	305	95.90, 2.70, -7.30

The names, symbols, logos, and all other intellectual property of the companies, brands, and people appearing herein are the exclusive property of their respective owners and should not be interpreted as an endorsement of or by Sappi; any legal and equitable rights in their intellectual property are exclusively reserved to those owners.

The data, specifications, and/or certifications provided herein are current as of the date of printing and may change without notice at Sappi's discretion.

Sappi is a trademark of Sappi Limited. MCCOY is a trademark of Sappi North America, registered in the U.S. and other countries.

Sappi North America FSC License Code FSC-C014955.

© 2020 Sappi North America. All rights reserved.

For more information about McCoy, please visit sappi.com/McCoy or scan the QR code.

Sappi North America
255 State Street, Boston, MA 02109

800.882.4332
www.sappi.com



The Fine Line of Sappi Papers

Our products

We engineer McCoy, Spectro, Opus, Somerset, Flo, Galerie, and EuroArt Plus to meet specific user needs, but there are several attributes you'll get from every piece of Sappi paper:

- Superior quality
- High-grade fiber
- Smooth printing surface
- Consistent press performance
- Dependability in the toughest printing environments
- Superior ink hold-out for full color intensity
- Uniform color reproduction
- Side-to-side consistency
- Tight variability tolerances
- Manufactured in the USA (McCoy, Spectro, Opus, Somerset, and Flo)

Pioneering research and innovation

At Sappi, our passion for paper can be traced back over 165 years and is what guides us today. Our history of industry firsts includes the first paper coated and calendered on two sides, the first dull-coated paper, and the first mill-branded paper. Our innovative spirit is also demonstrated in initiatives like *Sappi etc.* and *Ideas that Matter*, which provide thought leadership for the entire paper industry.

Sustainability

When you commit to a print campaign, you should be confident in your paper company's approach to sustainability. That's why we take a holistic view of our environmental responsibilities—from harvest through manufacturing, distribution, end use, and disposal. From beginning to end, we infuse environmental and social responsibility into our paper, processes, and people, in order to give you one less thing to worry about. McCoy's product features include:

- 10% recycled fiber
- SFI Certified Sourcing
- FSC® Chain-of-Custody (CoC) Certified or either SFI® or PEFC™ available upon request
- Lacey Act compliant
- SmartWay® Transport Partner

Best-in-class service

We go way beyond technical specifications to help you choose the right paper for your brand and campaign needs. And once you're on press, our trusted printer technical support team stands ready to make sure your project turns out just right.